

Determination of the Effectiveness of Chlorine Dioxide in the Treatment of COVID 19

Insignares-Carrione Eduardo^{1*}, Bolano Gómez Blanca², Andrade Yohanny³, Callisperis Patricia⁴, Suxo Ana Maria⁵, Arturo Bernardo Ajata San Martín⁶ and Camila Ostría Gonzales⁷

¹LVWG Global Research Director, Liechtensteiner Verein für Wissenschaft und Gesundheit, Liechtenstein, Switzerland (<https://orcid.org/0000-0001-9337-0884>)

²Director of the Research Department, Genesis Foundation, Colombia

³Specialist in Medical Bioethics, Oncology Palliative Care Specialist, Spain

⁴Director, Orthopedic and Traumatology Specialist, South clinic, La Paz, Bolivia, Spain

⁵MSc, Training and Research Center - Bolivia Today Association, Epidemiologist, South Clinic, La Paz, Bolivia, Spain

⁶Internal Medicine specialist, C Sorata 1146 V Victory, La Paz, Bolivia, Spain

⁷La Paz, Bolivia, Spain ([linkedin.com/in/camila-ostria-gonzales-96bb0514a](https://www.linkedin.com/in/camila-ostria-gonzales-96bb0514a))

Abstract

Introduction: The aim of this review is to determine the Effectiveness of Oral Chlorine Dioxide in the Treatment of COVID 19.

Methods: Research on the mechanism of action of chlorine dioxide on viruses, on the oral consumption of water-solubilized ClO₂ and on its toxicity was reviewed; a quasi-experimental investigation was conducted on the use of oral water-soluble chlorine dioxide in the treatment of 20 patients with active COVID 19 infection, compared to a control group of 20 patients not treated with chlorine dioxide.

Results: To compare the effect in the experimental group versus the control group, a test of comparison of proportions and their confidence intervals was performed for the general symptoms, and for the VAS and Likert criteria, a paired test using the Wilcoxon-Mann-Whitney test (α : 95%) was performed. When comparing the experimental group with the control group on the seventh day after symptom manifestation, a significant difference was found in the experimental group with respect to the control group for the symptoms Fever (p : 0.000), Cough (p : 0.0000), Chills (p : 0.0000) and Dyspnea (p : 0.0006). When performing the visual analogous comparison of pain in the control group and in the experimental group, it was found that in all the items that make up the scale decreased significantly in this group with respect to the control group (p : 0.0000; p : 0.0017). On day 14 post-demonstration the difference was greater (p : 0.000; p : 0.0043). When evaluating both groups (Control and Experimental) in the laboratories, a difference was found for the values of the parameters PC Reactive on day 7 (p : 0.0001) and DH Lactate (0.0036), with higher scores for the experimental group; Dimero-D on day 7 (p : 0.0194) and on day 14 (p : 0.0029); difference was found in all parameters. The results overall (p < 0.05) demonstrate the hypothesis that chlorine dioxide is effective in the treatment of COVID 19.

Conclusion: Chlorine dioxide is effective in the treatment of COVID 19 and the mechanisms of action by which it acts to achieve it are proposed in this work. We recommend doing more research. We recommend conducting double-blind studies and delving into studies of toxicological safety and therapeutic efficacy of chlorine dioxide in pathologies of epidemiological impact in the near future.

Keywords: SARS-CoV-2 • COVID 19 • Effectiveness • Chlorine Dioxide.

Introduction

In December 2019, a new respiratory illness emerged in Wuhan, China. The source of this infection was identified as a new coronavirus, related to other coronaviruses that had previously caused outbreaks of Severe Acute Respiratory Syndrome (SARS) between 2002 and 2004 and Middle East Respiratory Syndrome (MERS) in 2012 (National Institutes of Health, 2020). This virus was called "severe acute respiratory syndrome coronavirus 2" (SARS-CoV-2) and the disease resulting from infection by this virus was called "COVID-19". On March 11, 2020, the World Health Organization (WHO) declared COVID-19 a pandemic.

Coronaviruses are a group of enveloped RNA viruses that can damage

***Address for Correspondence:** Dr. Eduardo Insignares-Carrione, LVWG Global Research Director, Liechtensteiner Verein für Wissenschaft und Gesundheit, Switzerland-Liechtenstein; E-mail: eduardoinsignarescarrione@gmail.com / eic@lvwg.org

Copyright: © 2021 Insignares - Carrione, et al. This is an open-access article distributed under the terms of the Creative Commons Attribution License, which permits unrestricted use, distribution, and reproduction in any medium, provided the original author and source are credited.

Received 22 February 2021; Accepted 01 March 2021; Published 08 March 2021

multiple organ systems. Like other coronaviruses, the SARS-CoV-2 virus is a spherical particle with glycoprotein spikes on its surface. Coronaviruses enter host cells when a region of the spike, known as the "receptor-binding domain," binds to angiotensin-converting enzyme 2 (hACE2) in human cells. The viral membrane then fuses with the host cell membrane, allowing the viral genome to enter the host cell.

Chlorine dioxide (ClO₂) has been suggested as a potential agent in the fight against COVID-19 and has been proposed three clinical trials to examine the ability of ClO₂ to treat COVID-19. However, this agent is not well known, is not understood and is even demonized in the medical community, we assume that by confusion conceptual with sodium hypochlorite. Therefore, we set out to verify the effectiveness of oral use of the dioxide of chlorine in COVID 19 through this study, reviewing in depth the history of ClO₂, its safety / toxicity profile and its possible applications in the fight against COVID-19. The objective of this research is to determine if chlorine dioxide is effective in managing COVID 19 [1-65].

Literature Review

Chlorine Dioxide (ClO₂) Physical and Chemical Properties of Chlorine Dioxide

Chlorine dioxide, ClO₂, is a gas under standard conditions with a molar

mass of 67.45 g/mol. Typically, ClO_2 gas can be synthesized from the reaction between NaClO_2 (sodium chlorite) and C_{12} , NaClO_2 and HOCl , NaClO_2 , and an acid such as HCl or H_3PO_4 . It is easily soluble in water with a solubility of 3 g / 100 mL <https://www.vyhydroasesores.com/>.

The reactivity of chlorine dioxide is related to its structure and bond. Chlorine dioxide is a bent symmetric triatomic molecule (C_{2v} point group) with a Cl-O bond length of 147.3 picometers and a bond angle of 117.6 degrees (Figure 1A). ClO_2 has an odd number of electrons with 19 valence electrons and therefore, is a paramagnetic radical. Its electronic structure puzzled chemists for a long time because none of the possible structures and Lewisit is very satisfactory for chlorine dioxide [1-10].

The molecular orbital theory reveals that a single electron occupies the highest unoccupied molecular orbital, the p^* orbital, which makes the molecule a free radical and explains its reactive nature. The two resonance structures of ClO_2 are shown in Figure 1B. The resonance structures of the ClO_2 radical indicate the forms of a double bond between the central Cl atom and an O atom, and a single bond in combination with a 3-electron bond in the other Cl-O bond. The unpaired electron is shared between the three atoms within the two different resonance structures. Most of the density of a single electron is found in one or another O atom. This unique arrangement provides ClO_2 with a single unpaired electron and two reaction centers (O and Cl) on which to react.

When chlorine dioxide dissolves in water, most of it does not hydrolyze: it remains as a dissolved gas in solution. Another part does, and forms both chlorite ion (ClO_2^-) and chlorate ion (ClO_3^-). The solubility of chlorine dioxide in water at sea level and at 25°C is close to 3 g / L (≈ 3000 ppm). Its solubility increases at lower temperatures. Therefore, when its concentration is greater than 3 grams per liter, it is common to store it at temperatures close to 5°C. Dissolved in pure water, in a hermetically closed container, in the absence of light, and at a low temperature, it is quite stable although it slowly decomposes into chlorine and oxygen. Chlorides catalyze its decomposition.

In biological systems, ClO_2 can be expected to play an important role as an antiviral / microbial agent through oxidative chemistry.

The therapeutic action of chlorine dioxide is given by its selectivity for pH. It means that this molecule dissociates and releases oxygen when it comes into contact with another acid. When it reacts, it becomes sodium chloride (common salt) and at the same time releases oxygen, which in turn oxidizes (burns) the pathogens (harmful germs) of acidic pH present, converting them into alkaline oxides ("ashes"). Therefore, when chlorine dioxide dissociates, it releases oxygen into the blood, as do erythrocytes (red blood cells) through the same principle (known as the Bohr effect), which is to be selective for acidity. Like blood, chlorine dioxide releases oxygen when it encounters acidity, either from lactic acid or from the acidity of the pathogen. ClO_2 is a size-selective antimicrobial agent.

Multicellular tissue has the ability to dissipate this charge and is not affected in the same way. Chlorine dioxide, which is the second strongest disinfectant known after ozone, is much more suitable for use therapeutically since it is also capable of penetrating and eliminating biofilm, which ozone does not do. The great advantage of the therapeutic use of chlorine dioxide is the impossibility of a bacterial resistance to ClO_2 . Although ozone is stronger in terms of antiseptics, its high oxidative potential of 2.07 and its short half-life of only 15 minutes at 25°C with a pH value of 7.0 make it less effective, for *in vivo* therapeutic applications [11-20].

Chlorine Dioxide Antiviral Efficacy

Mechanism of Antiviral Action of ClO_2

ClO_2 exhibits antiviral activity through its oxidative chemistry. A virus consists of an outer shell or shell and an inner nucleic acid core. The viral envelope can be composed of proteins, lipid bilayers, and polysaccharides, and the envelope protects the nucleic acid core, in addition to providing selective binding and receptor cell recognition. Altering or modifying the viral envelope or nucleic acid nucleus will disrupt the modes of viral infection.

In the case of SARS-CoV-2, the carbohydrate envelope encloses it and

protects it even more, which makes it more difficult to attack than other viruses. Approximately 70% of the entire surface of the spike protein is coated with glycans; in the case of SARS-CoV-2, sugars are twice as essential. First of all, because they stabilize the spike in a conformation that allows it to fit with ACE2 receptors on our cells, the process that initiates infection. By removing some glycans from the surface, the spike protein is destabilized and, furthermore, the binding with these receptors is weakened.

A line of research is being developed in post-covid syndrome by one of the authors (B.Bolano), focusing attention on the possibility that ClO_2 acts at the level of inflammasomes or even NETosis as a possible explanation for the improvement in the post COVID 19 syndrome manifested by hundreds of doctors who have reported cases in the world. The relevance and evidence of these findings to the anti-inflammatory mechanism of action of ClO_2 remains unclear at this time.

In order to explore the mechanism of action more deeply, we selected published articles (pubmed, google scholar and other search engines) that describe the action of SARS-CoV-2 in cells, in its interaction with hACE2 and, in particular, we investigated augmented reality videos or simulation videos based on Silicon, for the three-dimensional representation of the places of action, such as the videos in which the spicular protein and the hACE2 receptor are manipulated, among others, with ChimeraX (UCSF) augmented reality software.

Similarly, we reviewed the structure of the virus spike and drew on the research of Daniel Wrapp and Jason S. McLellan of the University of Texas.

The three-dimensional image of the spicular S glycoprotein of the SARS-CoV-2 betacoronavirus has been seen with electron cryomicroscopy in record time. Thanks to this image with a resolution of 3.5 Å, it is confirmed that this S protein binds to the hACE2 protein of human cells with a higher affinity than that of the SARS-CoV coronavirus. Protein S is the target of the antibodies that immunize us. Its 3D structure allows us to understand why the monoclonal antibodies published against SARS-CoV are not effective against SARS-CoV-2.

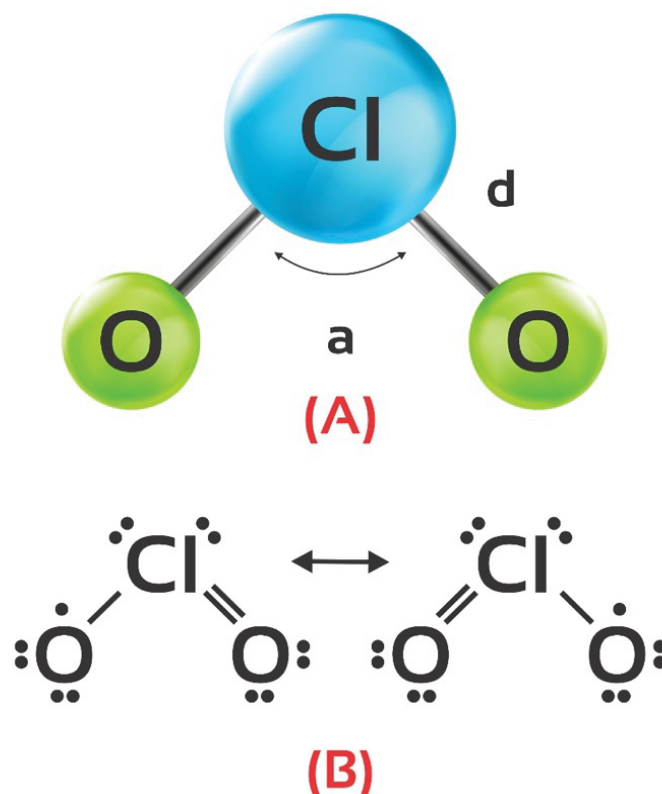


Figure 1: (A). Geometry of the ClO_2 molecule with group of points (C_{2v}). The bond angle a is 117.6° and the length of bond d is 147.3 pm. (B). Two resonance structures of ClO_2 are illustrated that reveal the unpaired electron, centered on the Oxygen atom, shared between the three atoms.

Based on this information, we did a study with a doctor in molecular biology from the University of Tsukuba in Japan, in which we sought to build the hypothesis of how chlorine dioxide acts on SARS-CoV-2 (Insignares - Carrione et al., 2020). As a result, we saw that there is an excellent correlation between its structure and its transmission mechanism, as well as the determination of the sites of action of promising substances or drugs in the treatment of COVID 19 and, however, we have not had the expected results for its rapid control with none of the drugs tested. Bioinformatics is a tool that uses biological data to study biological problems on a wide range of scales, such as evolution, structure, the function and regulation of nucleic acids and proteins with the help of computational methods. In our work in Japan, we carry out *in silico* analysis, which is a comprehensive quantitative approach that not only provides information on the dynamics of intracellular and intramolecular processes, but ultimately allows us to predict biological behavior from molecular interactions. This was done in our work by focusing on conserved domains, structure, function, and biochemical characteristics to understand the mechanism of action of chlorine dioxide on the spike and SARS-CoV-2 RNA. which is a complete quantitative approach that not only provides information on the dynamics of intracellular and intramolecular processes, but ultimately allows prediction of biological behavior from molecular interactions. This was done in our work by focusing on conserved domains, structure, function, and biochemical characteristics to understand the mechanism of action of chlorine dioxide on the spike and SARS-CoV-2 RNA. which is a complete quantitative approach that not only provides information on the dynamics of intracellular and intramolecular processes, but ultimately allows prediction of biological behavior from molecular interactions. This was done in our work by focusing on conserved domains, structure, function, and biochemical characteristics to understand the mechanism of action of chlorine dioxide on the spike and SARS-CoV-2 RNA (Figure 2).

This type of analysis not only provides information on RNA replication, but also simulates the dynamics of the interrelation between the spike and the hACE2 receptor. The investigation began with the nucleotide sequence of the viral RNA, the open reading frames (ORF's) were determined, which once analyzed, revealed the oxidation of guanine to 8-oxoguanine. The other bases were not modified. The amino acids oxidized by chlorine dioxide are found in the spike, located in the helices, S1, S2, RBD and hACE2, which could explain the almost immediate effect of clinical improvements achieved by dioxide (Insignares - Carrione et al., 2020).

Cysteine, belonging to the group of thiols, is an amino acid up to 50 times more reactive with all microbial systems than the other four amino acids and, therefore, it is impossible for it to create resistance against chlorine dioxide.

The hypothesis proposed by the authors (Insignares - Carrione, 2020) is that the cause of the antiviral effect of chlorine dioxide in SARS-CoV-2 can be explained by its actions on at least five amino acids (Cysteine, tryptophan, tyrosine, proline, hydroxyproline).

Pharmacokinetics

The pharmacokinetics of ClO₂ varies with the route of exposure. Scatina et al. (1984) examined the dermal absorption of a ClO₂ preparation applied to the shaved back of rats. The maximum absorption of Cl in plasma was observed after 72 hours and a plasma concentration of 69.4 mcg% Cl was reached. The absorption half-life was calculated as 22.1 hours, which corresponds to a rate constant of 0, 0314 h⁻¹ (Figure 3).

Fridyland and Kagan (1971) measured the degree of ClO₂ absorption in the oral cavity of human subjects by rinsing the mouth with water containing predetermined concentrations of ClO₂, and then measuring the residual concentrations of ClO₂ in the washings. They found that up to 30% of the ClO₂ was absorbed.

Safety / Toxicity

The safety / toxicity of ClO₂ depends on several variables, including the route of administration (e.g., inhaled, topical, or oral), the state of the molecule (i.e., gaseous or aqueous), the concentration (usually measured in mg / L or ppm for aqueous and ppm or mg / m³ for gaseous), and the duration of

exposure. ClO₂ gas is toxic at much lower concentrations than aqueous ClO₂. Toxicity also increases with the duration of exposure. The fact that ClO₂ is less toxic in aqueous form allows the use of this molecule as a safe disinfectant in municipal drinking water, as a disinfectant for drinking water at points of use and as a food disinfectant, among other uses (Figure 4).

Below is a review of studies examining the safety and toxicity of ClO₂.

ClO₂ Solubilized in Water

In vitro studies

Noszticzius et al. (2013) examined the differential effects of ClO₂ on microbes versus humans or animals. They performed perfusion studies using protein membranes and found that the size of the organism exposed to ClO₂ influences the effects of the oxidant. They reported that a low concentration of ClO₂ quickly kills micron-sized organisms while causing little harm to larger organisms, such as humans. The authors suggested that the reasons for this differential effect are: (1) ClO₂ cannot penetrate deeply into the tissues of larger organisms and (2) the circulation of larger organisms provides a constant supply of antioxidants, offering protection against the effects. ClO₂ oxidants.

In vitro studies found that methemoglobin was not formed unless glutathione concentrations in red blood cells were almost completely depleted (Heffernan et al. 1979a).

In vivo Animal Studies

Daniel et al. (1990) exposed rats to ClO₂ concentrations of 0, 25, 50, 100 or 200 mg / liter for 90 days. This equates to doses of 11.5 mg / kg / day in males and 14.9 mg / kg / day in females. No exposure-related deaths were reported.

Abdel-Rahman et al (1982b) reported LD50 rates for female rats of 340 to 468 mg / kg and for male rats of 292 to 424 mg / kg after a single gavage dose. Additional reports of LD50 in rats include 94 mg / kg (WHO, 2002), 140 mg / kg (Musil et al., 1963), 292 ppm (National Institute for Occupational Safety and Health, 2014) and > 5,000 mg / kg (US Environmental Protection Agency, 2008). The LD50 in mice has been reported to be > 10,000 mg / kg (Shi et al. 1999).

In a study carried out at the University of Querétaro (Mexico) in 2020, researchers challenged the hypothesis that ClO₂ decreases viral load and virus-induced mortality in a vertebrate model. To do this, they determined the

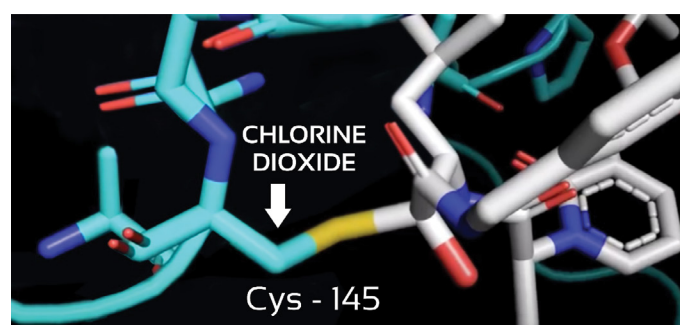


Figure 2: Positions of the amino acid (cysteine) in the structure of the spike, one of the possible sites of action of ClO₂.

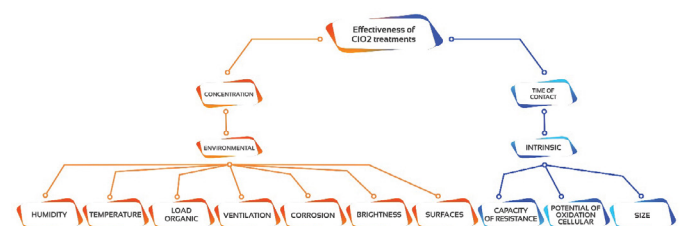


Figure 3: Effectiveness of chlorine dioxide treatment based on concentration and contact time.

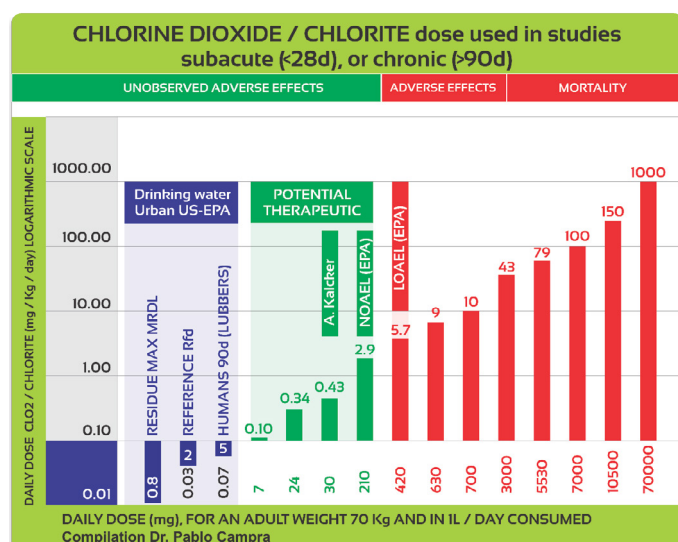


Figure 4: Review of experimental levels of chlorine dioxide / chlorite systemic toxicity. In blue, reference levels for disinfection of drinking water (US-EPA); in green, levels with evidence of therapeutic efficacy at zero toxicity (Refs A Kalcker and E. Insignares Carrione); red: minimum levels of toxicity detection reported in different *in vivo* studies in animals and humans.

viral load, virus-induced lesions, and mortality in 10-day-old chicken embryos inoculated with 104 EID₅₀ / mL in media of attenuated avian coronavirus (IBV) strains from Massachusetts and Connecticut. ClO₂ treatment had a marked impact on IBV infection. Specifically, viral titers were 2.4 times lower and mortality was reduced by half in infected embryos that were treated with ClO₂. The infection caused developmental abnormalities, regardless of treatment. Lesions typical of IBV infections were observed in all inoculated embryos, but severity tended to be significantly less in ClO₂-treated embryos. They found no gross or microscopic evidence of toxicity caused by ClO₂ at the doses used in this case. The study concludes that ClO₂ could be a safe and viable way to treat and mitigate the effects of avian coronavirus infections, and raises the possibility that similar effects may be observed in other organisms. (Xóchitl Zambrano-Estrada et al, 2020).

Water Solubilized Chlorine Dioxide (CDS) in Human and Animal Studies

The studies by Lubbers et al. (1982, 1984a) at the Ohio State University School of Medicine evaluated the short-term toxicity of drinking ClO₂. In the first study (Lubbers et al. 1982), a group of 10 healthy adult males drank 1,000 ml (divided into two 500 ml portions, 4 hours apart) of a gradually increasing dose of ClO₂. The study included a series of six sequences of 3 days each in which subjects drank 0.1, 1.0, 5.0, 10.0, 18.0, and 24.0 mg / L of a ClO₂ solution. (0.34 mg / kg, assuming a reference body weight of 70 kg). In the second study (Lubbers et al., 1984a) groups of 10 adult males received 500 ml of distilled water containing 0 or 5 mg / L ClO₂ (0.04 mg / kg-day assuming a reference body weight of 70 kg) for 12 weeks.

In a comparative study of hyperpure chlorine dioxide with two other irrigants regarding the viability of periodontal ligament stem cells (PLDSCs), cell viability experiments demonstrated that the application of ClO₂ does not lead to a significant decrease in the viability of PLDSCs. In the concentrations used to kill microbes. In contrast, traditional irrigants, H₂O₂ and CHX are highly toxic to PLDSCs. The aging of PLDSC cultures (passages 3 vs. 7) has characteristic effects on their responsiveness to these agents, since the increased expression of the mesenchymal stem cell markers becomes decreased. They conclude that although the active ingredients of mouthwashes (H₂O₂).

Oral ingestion of ClO₂ solubilized in water.

The only study conducted for the use of water-solubilized ClO₂ (CDS) ingested by oral route is our present study carried out in a multicenter clinical

trial in various countries from central and South America (<https://clinicaltrials.gov/ct2/show/NCT0434374>). Statistics of Bolivia where the use of water-solubilized ClO₂ for the prevention and treatment of COVID-19 was approved by law in early August 2020, demonstrate a marked reduction in cases and deaths in that country. The highest peak recorded in Bolivia was epidemiological week 29 (10,939 cases), with cases falling to 670 in epidemiological week 45, (representing a 93% decrease). The case-fatality rate decreased from 8% to 4.5% in epidemiological week 36, coinciding with the massive use of dioxide in the population without it being possible to affirm with certainty that dioxide is responsible for this decrease. (<https://snis.minsalud.gob.bo/>). From a peak of 2,031 daily cases on August 20, 2020, cases dropped to 147 daily cases on October 21, 2020, representing a 93% decrease. Daily deaths decreased from a peak of 132 on September 3, 2020 to 24 deaths on October 21, 2020, with an 82% decrease in mortality. (<https://www.COVID19.onl/country/bolivia>).

While there was a rebound in cases from epidemiological week 49 to 53, mortality remained relatively low. Some doctors linked to our research group (in Bolivia more than 220 doctors) provide feedback that the population reduced the consumption of dioxide and that could be a possible explanation for the peak, and the increase in the consumption of chlorine dioxide again reduced the peak to the previous levels, maintaining a reduced comparative mortality (personal communications) (Figure 5).

In summary, while in other countries the plateau was maintained, in Bolivia it fell, attributing this decrease (as a possible explanation) to preventive measures, the consumption of chlorine dioxide and the massive use of traditional medicine as a possible explanation.

Dose

In vitro and *in vivo* studies demonstrate that low doses of water-solubilized ClO₂ exhibit potent and rapid antiviral activity against a wide range of viruses. In a study on drinking water in the Netherlands, Jin et al. (2013) found that treatment with ClO₂ at concentrations of 0.5 ppm for 25 minutes, or 1.5 ppm for 10 minutes, or 2 ppm for 5 minutes achieved at least a 4 log reduction of enterovirus. Schijven et al (2019) demonstrated that municipal drinking water treated with ClO₂ (0.1 ppm in summer and 0.05 ppm in winter) significantly reduced adenovirus levels to levels that are considered safe for drinking water.

Alvarez and O'Brien (1982) found a ClO₂ concentration of 40 ppm added to wastewater seeded with SARS-CoV that completely inactivated the SARS-CoV in 30 minutes.

The dose used in this research is 30 mg per day for 21 days, which is well below the NOAEL, or in the worst case the same as the NOAEL reported in previous studies in animals, as we discussed in previous lines. .

Materials and Methods

To make the greatest search for scientific information on chlorine dioxide, and they searched Google Scholar, PubMed (Medline), LILACS, Cochrane Library, Science, Scielo, MedScape, looking for articles in English and Spanish, which would contain search terms chlorine dioxide, virus, SARS-CoV-2, coronavirus, oxidant, water purification, "Chlorine dioxide" OR "Chlorine dioxide protocol" OR Chlorine dioxide AND virus; Chlorine dioxide AND SARS-COV-2; OR "COVID-19 drug treatment" OR "spike glycoprotein, COVID-19 virus" OR "severe acute respiratory syndrome coronavirus 2" OR "COVID-19" OR "2019-nCoV" OR "SARS-CoV-2" O "2019 new coronavirus" OR "2019 coronavirus disease" OR (pneumonia).

Additionally, a Google search was conducted using these same search terms. The articles selected for inclusion consisted of publications related to the potential use of ClO₂ as prevention or treatment of COVID-19, on the beneficial aspects and possible effects of maleficence or toxicity of the substance. All retrieved articles were screened and a subset of relevant abstracts was selected for further evaluation. The bibliographies of these articles were then searched for additional references. The final articles selected for inclusion in this review consisted of articles examining historical uses, chemistry, toxicity, antimicrobial and virucid ClO₂, previous investigations in animals *in vitro*

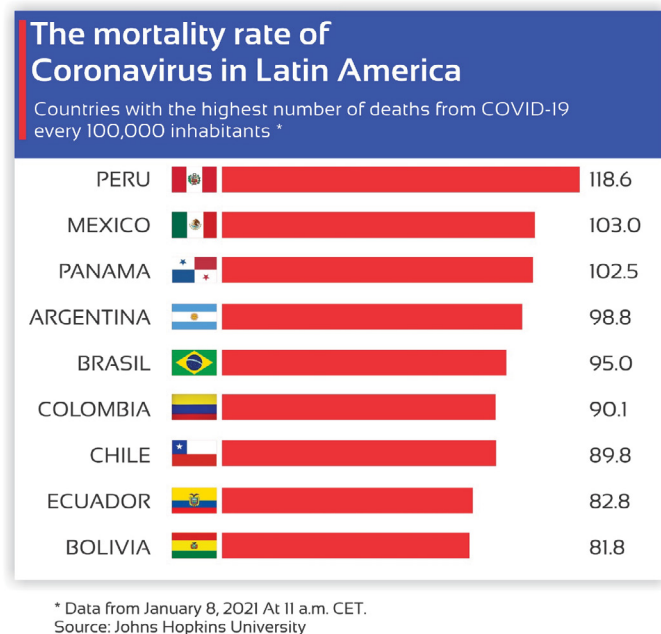


Figure 5: The death rate of the Coronavirus in Latin America.

and in vivo, and research in humans. The registries of www.clinicaltrials.gov and those of the WHO International Clinical Registry Platform (ICTRP) were reviewed to identify ongoing or unpublished clinical trials.

From the search results, we selected those that referred to the virucidal action of chlorine dioxide on various microorganisms, in particular on viruses and, among them, SARS-CoV-2 or SARS-CoV.

On the other hand, we selected articles that describe the action of SARS-CoV-2 in cells, in its interaction with ACE2 and, in particular, we investigated augmented reality videos or simulation videos based on Silico, for three-dimensional representation. De sites of action such as videos in which the spicular protein and the ACE2 receptor (37) are manipulated, among others, with the ChimeraX (UCSF) augmented reality software.

Similarly, we reviewed the structure of the virus spike and relied on the research of Daniel Wrapp and Jason S. McLellan of the University of Texas, information with which, in a parallel study, we were able to hypothesize how chlorine dioxide acts on SAR-CoV-2.

With the information needed to conclude that chlorine dioxide was beneficent and that its use in the COVID 19 pandemic is turned in an immense possibility to control it based on the scientific foundations revealed in previous investigations, and above all, that it was not maleficent for patients, we take the decision to carry out the investigation for determine if it was effective orally in the treatment of COVID 19.

We decided to carry out a phase IIa design given the urgency to verify a option effective, fast and economical treatment that could be implemented quickly worldwide, which is why we opted for a quasi-experimental clinical trial.

The NCBI (National Center for Biotechnology Information) for Medline and Pubmed databases recently included the concept of ECE (Quasi Experimental Studies) under the MeSH term "Non-Randomized Controlled Trials as Topic" (NCBI, 2015).

Once the research protocol was done, it was decided to register it in clinicaltrials.gov which was accepted on April 7, 2020 under the number NCT 04343742. The design was made international multicenter in order to have a faster collection of the sample and in the future, to have a much larger and more representative sample. The same protocol was presented in eleven American countries and in Spain for approval. Unfortunately, drug control entities in all countries generated warnings and even bans on its use for human consumption that made it difficult for ethics committees to

approve the protocol. In Bolivia the law was approved No. 1351 of 2020 that authorized the elaboration, commercialization, supply and consented use of the CDS chlorine dioxide solution as prevention and treatment in the face of the coronavirus pandemic (COVID 19); The ethics committee endorsed by the Bolivian Ministry of Health was legally constituted, which approved this multicenter research protocol of international scope, retro-prospective, made up of five (5) universities (Technical University of Oruro, Public University of El Alto, Universidad Mayor de San Simón, Gabriel René Moreno Autonomous University and Yacuiba Technical Institute "Gran Chaco") which in turn, through its scientific and ethical clinical research committees, are doing their own research on chlorine dioxide for use in different applications [20-35].

Data collection and registration

Data collection and recording was carried out by recording demographic and symptomatic data and by means of observation scales based on visual analogue scale (VAS) and laboratory parameters organized by Likert scale for better evaluation and comparability. Thus, the instruments or formats were built, which were recorded in software specially designed for research with the following characteristics:

An electronic form in a WEB environment was specially designed for the registration of information required in the investigation through PCs, smartphones and tablets.

The application was developed by the company SCORPII SAS in 2020, with the following functionality:

- Registration of the contact information and basic profile of the investigating physician, who identifies the location of the medical center where the patient was treated for the first time and records their contact details and socio-cultural profile.
- File of the letter of informed consent for the use of an investigational substance, signed by each patient.
- Registration of the information on the patient's initial diagnostic clinical history.
- Record of the patient's follow-up clinical history in relation to his symptoms, pain scale (VAS) and assessment with the Likert scale of the laboratory reports made on day 0, 7, 14 and 21.
- In relation to the security conditions, the registered information does not have options to make changes or adjustments to the registered information by the investigating physicians, guaranteeing the authenticity, integrity and confidentiality of the information. Each researcher has access to the application through the authentication of their email and password, in such a way that they are solely responsible for the registration of information on each of their patients.
- Generation of information consolidation reports for statistical analysis, a function of access exclusively by the research director, without options for modifying the database of records made by investigating physicians.

That is, the instruments made it possible to collect and record the results from the performance of semiological, clinical and laboratory examinations at the beginning of the study treatment of the experimental group and the control group, as well as after 7, 14 and 21 days.

In addition to demographic data, the following are measured:

Semiological: red eyes, fever, cough, expectoration, asthenia / adynamia, chills, vomiting, dyspnea, nasal congestion.

The VAS criteria (The visual analog scale or VAS) for pain it is a straight line in which one end means no pain and the other end means the worst pain imaginable. The patient marks a point on the line that matches the amount of pain felt) and the variables investigated. They are: sore throat, head, chest, general myalgic type, affectionation due to low back pain.

Likert criteria (The Likert scale is an *ordinal* scale using 5 levels) grouped paraclinical exams. The variables investigated are lymphocytes, leukocytes,

platelets, C-reactive protein, Lactate dehydrogenase, AST, -D-dimer and lactate in oximetry.

The instruments made it possible to collect and record the results from the performance of semiological examinations, assessment of painful symptoms (VAS) and laboratory (LIKERT) at the beginning of the treatment under study (or baseline) as well as after 7, 14 and 21 days .

Analysis and Interpretation of the Data

It is carried out according to the established variables, with the support of the IBM - SPSS Statistics software; the data of the experimental and control groups were analyzed, the general symptoms by means of a comparison of proportions test and their confidence intervals, and the VAS and Likert criteria by means of a paired test using the Wilcoxon - Mann - Whitney test α : 95%.

Population

The experimental population to which the multicenter study was directed consisted of a group of patients with active infection with COVID-19, in various medical centers in Bolivia (14 patients) , most of them in the southern clinic in La Paz, Bolivia , Peru (two patients) and Ecuador (four patients) for a total of twenty (20) patients. The control population consisted of eight (8) patients from Ecuador, seven (7) patients from Bolivia, three (3) from Mexico and two (2) from Peru, for a total of twenty (20) patients.

Patients

The selection of the treatment or experimental group was made based on patients with active COVID 19 infection, who were with positive RT-PCR, symptomatic in intervals from 3 to 7 days, which were not in the resolution phase, who were proposed to be voluntary research subjects. Control group patients chose not to be chlorine dioxide treatment subjects. Similarly, simultaneity was applied, which means that patients were obtained in the same period of time in which the cases arose. Viral load was not determined due to costs, technical and logistical difficulties of the reference laboratories in Mexico, Bolivia, Peru and Ecuador.

Number of Patients

Twenty patients (n = 20) for the experimental group and 20 patients (n = 20) for the control group were included in the study. A one-to-one relationship per center was not maintained and they were presented randomly according to a probabilistic sample design.

Acceptance Criteria in the Study

The following inclusion criteria were used: Covid 19 RT-PCR positive, characteristic symptoms of Covid-19: fever, odynophagia, respiratory distress, aged between 18 and 80 years.

Exclusion Criteria

Covid 19 RT-PCR negative, IV / VI renal failure, congestive heart failure, patients who consume anticoagulants in particular warfarin sodium.

Duration of Treatment per Patient

The observation period per patient in the experimental group was (21) twenty-one days. In the control group it was fourteen (14) days. A review was carried out at the beginning, at 7, 14 and 21 days in the experimental group; in the control group at the beginning, at 7 and 14 days. Post-protocol clinical follow-ups (day 22 onwards) were not included in the experimental group and neither in the control group. It is important to note that there was clinical follow-up by the research staff in most of the patients treated and not treated with chlorine dioxide, observing resolution completeness of symptoms in the treated group. As an empirical observation, the researchers' report that patients who consumed chlorine dioxide as a treatment for COVID 19, substantially reduced post-COVID 19 symptoms compared to patients with the disease, not treated with dioxide.

Total duration of the study

The study began in July 2020 and concluded in December 2020.

Assignment of study medication

Each patient received, in order of admission to the study, a consecutive patient number (odd numbers were selected) and the corresponding study medication. The allocation of this medication was made prior to the start of the study, by means of a computer generated list of vials produced for the purpose of the research. The patients received the chlorine dioxide base preparation at 3,000 ppm, produced by electrolysis with ultrapure chlorine dioxide generating equipment, brand medalab www.cl02.com with precise written instructions on how to prepare, drink and preserve dilutions. The chemists of the research team controlled the standardization of the water used for the base preparation of the dioxide at 3000 ppm, as well as the water used for diluting and drinking; the controlled variables were: conditions and characteristics of the preparation process, standardized characteristics of the container, use of standardized Merck 28% sodium chlorite, standardized sterile double-distilled water, buffered at pH 7 and chlorine dioxide concentration at 3,000 p.p.m.

The control group received anti-inflammatory treatment (ibuprofen at doses between 200 and 400 mg every 8 hours), antibiotics (azithromycin 500 mg daily for 5 days), antihistamines (hydroxyzine x 5 mg every 12 hours), corticosteroids (generally 40 mg of methylprednisolone every 12 hours for 3 days and then 20 mg every 12 hours for 3 days) and supportive measures. The experimental group did not receive this treatment.

Dosage and Routes of Administration

The medication used is chlorine dioxide 3000 ppm in x 120 cc bottles marked with a planned label and administered according to the standard established in the research protocol.

Chlorine Dioxide Administration Protocols used:

Initial protocol, loading or protocol (F): 10 ml of chlorine dioxide 3000 ppm is added to 1 liter of water, and the liter is taken in two hours, divided into eight (8) equal doses. Then it is administered.

Maintenance protocol: (C) 10 ml of chlorine dioxide 3000 ppm is added to 1 liter of water, and the liter is given to drink divided into ten (10) equal doses, during the day, every hour.

The medication is managed orally dissolved in the mouth, at least 60 minutes before or after a meal. There were no remnants or shortages in the medication delivered and the original protocol were strictly adhered to. There is no abandonment of treatment.

Results

Preliminary analysis of the parameters at study entry

The characteristics of the patients in the experimental group at the time of admission, after verification of the positive RT-PCR, generated the following data: By sex: 13 male patients (65%) and 7 female (35%).

The ages range between 36 years the minimum and 72 years the maximum. The average age for men is 47.6 years and for women 58 years of age. The general average age is 53.2 years.

A parallel instrument was designed to record possible adverse effects of chlorine dioxide where the data of each patient and their adherence process are placed. In two patients, a slight sensation of gastritis was registered, 7 days after treatment, temporary, which resolved without intervention and did not require stopping the medication (Figure 6).

Characteristics of the control group

The characteristics of the patients in the control group at the time of admission after verification of the positive RT-PCR generated the following data: By sex: 10 male patients (50%) and 10 female (50%).

The ages range between 44 years the minimum and 69 years the maximum. The average age for men is 55.6 years and for women 52 years of age. The general average age is 54.5 years (Figure 7).

Result of the comparison of the Experimental versus Control Group by means of a comparison of proportions test and their confidence intervals and Wilcoxon – Mann – Whitney test (α : 95%)

To evaluate the effectiveness of the ClO₂, the results of each of the items were compared by means of a comparison of proportions test and their confidence intervals (general symptoms) and a Wilcoxon – Mann – Whitney test (α : 95%)(VAS and Likert) of the data obtained from the Experimental Group compared with the Control group in the Cohort points of Onset of Symptoms, 7 and 14 days after the first symptomatic manifestation.

Below we present the comparisons between the groups, for general symptoms, VAS and Likert (Table 1).

Regarding general symptoms, on the day of onset of general symptoms, both groups (Control and Experimental) were the same for most of the items ($p > 0.05$). However, for the Chills the Experimental group had a higher Average Range (25.5) than that of the Control Group (15.5) ($p : 0.0001$). These results confirm that in general for general symptoms, both groups had a similar behavior.

When making the comparison on the seventh day post symptom manifestation, a significant difference was found in the Experimental group with respect to the control group for Symptoms Fever ($p: 0.000$), Cough ($p: 0.000$), Chills ($p: 0.000$) and Dyspnea ($p: 0.0006$). At day 14 in the symptoms that had not disappeared, the difference was very significant, decreasing its manifestations in the Experimental group (Table 2).

For the VAS Scale, at the time of symptom manifestation, both groups reported the same subjective assessment of pain. When performing the same visual analogue comparison of pain in the control group and in the experimental group, it was found that all the items that make up the scale decreased significantly in this group with respect to the Control group on day 7 ($p: 0.0000$; $p:0.0017$). The only painful symptom that remained similar was low back pain ($P: 0.9633$). On day 14 post manifestation the difference was greater ($p: 0.000$; $P: 0.0043$ y $P: 0.0067$) (Table 3).

When evaluating both groups (Control and Experimental), a difference was found for the values for the PC Reactive parameters ($p: 0.0398$) and Lactate DH (0.0422), the scores being higher for the experimental group; no difference was found in the rest of the parameters. When comparing the groups at 7 days post-initial manifestation, only the Lymphocytes and Leukocytes showed no difference between groups ($p > 0.05$), the other parameters significantly decreased in the Experimental group with respect to the Control. ($p:0.0001$; $p: 0.0036$; $p: 0.0403$; $p: 0.0194$; $p: 0.0003$). At day 14, all the biochemical parameters had decreased significantly in the experimental group with respect to the Control group ($p < 0.05$).

The results overall ($p < 0.05$) demonstrate the hypothesis that chlorine dioxide is effective in the treatment of COVID 19.

Permanence of the intervention

As we noted in previous lines, the design of the protocol did not include post-intervention follow-up beyond day 21, which was the limit that we set ourselves from the beginning. As a non-parameterized observational annotation, we can share that the group of researchers did clinical follow-up of the patients until approximately two months after the onset of the disease, verifying a satisfactory evolution with very few post-covid symptoms. Some of the patients noted some mild spinal discomfort and some degree of chronic fatigue.

Discussion and Recommendations

This research has focused on studying the effectiveness of the use of chlorine dioxide in patients with COVID 19, by measuring before and after treatment, present clinical symptoms and laboratory variables based on

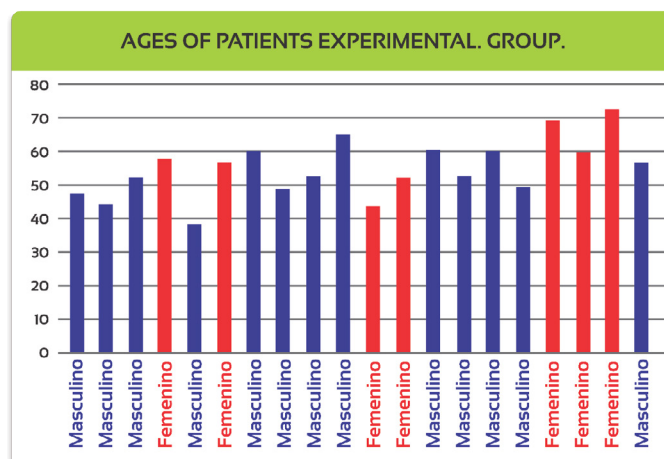


Figure 6: Ages of Patients Experimental Group.

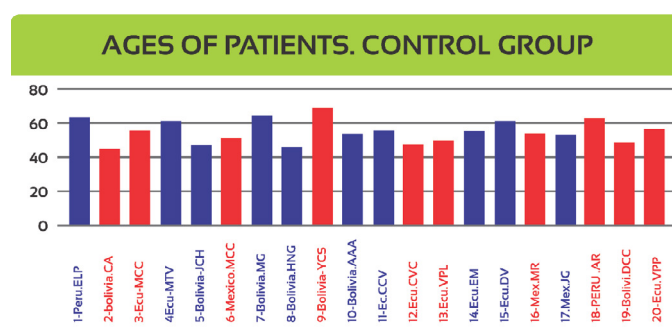


Figure 7: Ages of Patients. Control group.

standardized and accepted scales in research (VAS and Likert) of an experimental group compared to a control group.

Regarding the research question whether chlorine dioxide could effectively reduce morbidity and mortality in COVID 19, the confirmatory significant statistical validation by the U test of Wilcoxon – Mann – Whitney test (α : 95%) in the experimental and control groups reveal this and confirm the hypothesis that chlorine dioxide is effective in the treatment of COVID 19.

This phase IIa clinical trial is the preliminary phase for the realization of an upcoming phase IIb, double-blind randomized study, where we can have a sample of 400 patients, a purpose in which we are already working.

The main advantage of the design we chose is that it is a simple and inexpensive study to carry out (the authors did not receive any external funding and the costs were paid directly and personally by them) than a clinical trial with a larger sample number, in particular double blind that would increase the cost significantly. On the other hand, it is the only way to carry out a study when there are ethical and feasibility problems to carry out a random assignment of the sample (Manterola et al), or when it is necessary to carry it out under natural conditions and in this case, due to manifest urgency. given the pandemic.

The disadvantages are the high susceptibility to biases, especially those of selection and confusion, so to reduce it, we used random probability sampling, numbering the patients who were diagnosed and treated, selecting odd-numbered patients for inclusion in the research; the sample of control patients were selected in the same way.

On the other hand, we chose not to use existing groups so as not to compromise the external validity and applicability of the results. Another inherent difficulty in our study is the risk of presenting a placebo effect and a Hawthorne effect, which we could not minimize given that, given the humanitarian crisis of the pandemic, we did not consider it ethical for the subjects to participate in the study without being informed of the intervention that would be applied to them (Molina and Ochoa, 2014). In fact, all participants signed an informed consent for the use of a drug or substance under investigation, in particular because

Table 1: Result of the comparison of the Control Group versus the Experimental Group by means of a comparison of proportions test and their confidence intervals for General Symptoms.

Symptom	Group	Day 0		Day 7		Day 14	
		n (%) P-value		n (%) P-value		n (%) P-value	
Fever	Ctrl	18 (90%)	0,3160	14 (70%)	0,0000	12 (60%)	0,0000
	Exp	17 (85%)		0 (0%)		0 (0%)	
Cough	Ctrl	20 (100%)	0,0680	18 (90%)	0,0000	18 (90%)	0,0000
	Exp	18 (90%)		6 (30%)		6 (30%)	
Asthenia Adynamia	Ctrl	18 (90%)	0,1015	20 (100%)	0,0000	20 (100%)	NA
	Exp	15 (75%)		2 (10%)		0 (0%)	
Expectoration	Ctrl	7 (35%)	0,1405	3 (15%)	0,0301	0 (0%)	NA
	Exp	4 (20%)		0 (0%)		0 (0%)	
Chills	Ctrl	17 (85%)	0,0001	10 (50%)	0,0000	4 (20%)	0,0127
	Exp	7 (35%)		0 (0%)		0 (0%)	
Vomit	Ctrl	1 (5%)	0,1524	0 (0%)	NA	0 (0%)	NA
	Exp	0 (0%)		0 (0%)		0 (0%)	
Dysnea	Ctrl	18 (90%)	0,5000	16 (80%)	0,0006	12 (60%)	0,0005
	Exp	18 (90%)		7 (35%)		3 (15%)	
Nasal Congestion	Ctrl	5 (25%)	0,2438	2 (10%)	0,0680	0 (0%)	NA
	Exp	7 (35%)		0 (0%)		0 (0%)	

Table 2: Result of the comparison of the Control Group versus the Experimental Group through a Wilcoxon – Mann – Whitney test (α : 95%) for the VAS Scale.

VAS Scale	Group	Day 0		Day 7		Day 14	
		median (IC) P-value		median (IC) P-value		median (IC) P-value	
Throat pain	Ctrl	3,1 IC \pm 0,6	0,9670	2,1 IC \pm 0,4	0,0000	1,3 IC \pm 0,3	0,0000
	Exp	3,2 IC \pm 0,9		0,0 IC \pm 0,0		0,0 IC \pm 0,0	
Headache	Ctrl	2,9 IC \pm 0,5	0,2665	2,9 IC \pm 0,4	0,0000	2,5 IC \pm 0,4	0,0000
	Exp	2,6 IC \pm 0,8		0,5 IC \pm 0,2		0,4 IC \pm 0,2	
Chest pain	Ctrl	0,6 IC \pm 0,3	0,9018	0,6 IC \pm 0,3	0,0017	0,4 IC \pm 0,2	0,0043
	Exp	0,6 IC \pm 0,2		0,1 IC \pm 0,1		0,0 IC \pm 0,0	
General pain	Ctrl	2,1 IC \pm 0,4	0,8660	2,4 IC \pm 0,4	0,0000	2,6 IC \pm 0,4	0,0000
	Exp	2,1 IC \pm 0,7		0,5 IC \pm 0,2		0,0 IC \pm 0,1	
Lumbar/affect	Ctrl	1,5 IC \pm 0,3	0,7827	1,6 IC \pm 0,2	0,9633	1,6 IC \pm 0,2	0,0067
	Exp	1,6 IC \pm 0,3		1,7 IC \pm 0,3		2,0 IC \pm 0,2	

Table 3: Result of the comparison of the Control Group versus the Experimental Group through a Wilcoxon – Mann – Whitney test (α : 95%) for Biochemical Parameters on the Likert Scale.

Parameter	Group	Day 0		Day 7		Day 14	
		median (IC) P-value		median (IC) P-value		median (IC) P-value	
lymphocytes	Ctrl	1,5 IC \pm 0,3	0,7827	1,6 IC \pm 0,2	0,9633	1,6 IC \pm 0,2	0,0067
	Exp	1,6 IC \pm 0,3		1,7 IC \pm 0,3		2,0 IC \pm 0,2	
leukocytes	Ctrl	2,6 IC \pm 0,4	0,2582	3,1 IC \pm 0,3	0,4842	3,3 IC \pm 0,2	0,0002
	Exp	2,8 IC \pm 0,4		2,9 IC \pm 0,3		2,5 IC \pm 0,3	
Platelets	Ctrl	2,4 IC \pm 0,3	0,0816	2,7 IC \pm 0,2	0,0202	3,0 IC \pm 0,2	0,0212
	Exp	2,7 IC \pm 0,3		3,3 IC \pm 0,4		2,6 IC \pm 0,3	
PC Reactive	Ctrl	3,2 IC \pm 0,2	0,0398	3,4 IC \pm 0,2	0,0001	3,5 IC \pm 0,2	0,0000
	Exp	3,0 IC \pm 0,0		2,0 IC \pm 0,5		1,4 IC \pm 0,2	
Lactate DH	Ctrl	2,6 IC \pm 0,3	0,0422	2,7 IC \pm 0,3	0,0036	2,7 IC \pm 0,2	0,0000
	Exp	3,2 IC \pm 0,4		1,9 IC \pm 0,4		1,5 IC \pm 0,2	
AST	Ctrl	3,2 IC \pm 0,4	0,5319	3,2 IC \pm 0,3	0,0403	3,5 IC \pm 0,3	0,0000
	Exp	3,2 IC \pm 0,4		2,5 IC \pm 0,6		1,9 IC \pm 0,3	
Dimero D	Ctrl	3,1 IC \pm 0,4	0,3060	3,4 IC \pm 0,4	0,0194	3,5 IC \pm 0,3	0,0029
	Exp	3,4 IC \pm 0,5		2,6 IC \pm 0,4		2,6 IC \pm 0,4	
Lactate	Ctrl	1,9 IC \pm 0,3	0,0145	2,2 IC \pm 0,2	0,0003	2,5 IC \pm 0,2	0,0000
	Exp	2,5 IC \pm 0,4		1,5 IC \pm 0,3		1,1 IC \pm 0,1	

chlorine dioxide has not yet complied with the corresponding process to be classified as a drug.

Regarding the results and the possible explanations for them, the most important thing in the experimental group is the negativization of the RT-PCR in one hundred percent of the cases at seven days, as well as the rapid way

in which the results are reduced. general symptoms in patients, in particular fever, cough, dyspnea, asthenia and general pain, which is achieved in 70% of cases seven days after treatment, a very marked reduction in VAS values in percentage similar to 7 days, in particular reduction of sore throat by 100%, reduction of low back pain by almost 80%, results that reveal a significant

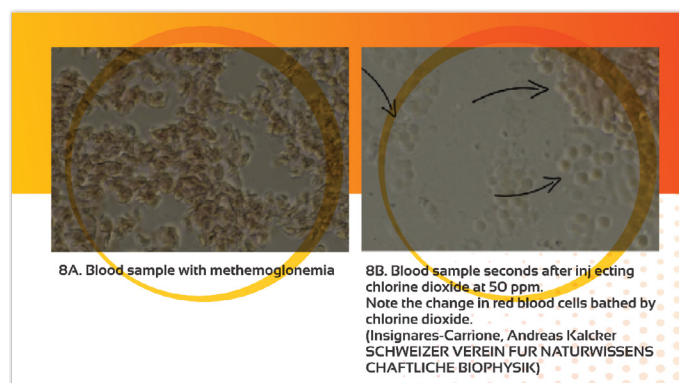


Figure 8: Blood samples with methaemoglobinemia and with ClO₂.

could be explained by the action of the dioxide through the oxidative mechanism of amino acids of the virus "anchored" to the unitβ1 of hemoglobin, improving oxygenation. We verified this mechanism as a possibility, in the research that we did in molecular biology through in silico simulation, in Japan, and it will be the subject of a future paper. In the same way, Pichert (2019) in his research suggests that chlorite interacts with the forms of hemoglobin and oxidized hemoglobin. Chlorite inactivates iron hemoglobin and methemoglobin. By these mechanisms, chlorite effectively decreases the yield of cytotoxic hemoglobin species that may appear later of excessive hemolysis of red blood cells in pathological situations.

Likewise, in the laboratory of the Liechtensteiner Verein für Wissenschaft und Gesundheit in Switzerland we were able to verify the immediate oxygenation of erythrocytes, by injecting chlorine dioxide at a concentration of 50 ppm to a sample of red blood cells with methemoglobinemia, using contrast microscopies. Phase and direct (Figure 8).

An interesting characteristic when we observe the behavior of the reduction of thrombocytosis in the 21 days of treatment, is that there could be an action of dioxide on the rheological behavior of the blood, an idea that is reinforced with the evident decrease of D-dimer in treated patients with the dioxide.

The lymphopenia observed in most patients could be due to a process that begins with disorganization of the cytoskeleton, condensation of chromatin and cytoplasm, loss of mitochondrial function, DNA fragmentation and terminal formation of ruptured membranes or apoptotic bodies, finally eliminated by macrophages. This phenomenon is mediated by the synthesis of the caspase-8 complex, which we consider could be activated by non-canonical means. The complex is favored by protein kinase-R, also accelerated by interferon generated in the presence of the virus. The signaling pathways that are activated by these receptors initiate an inflammatory response, with antiviral effects,

The virus also activates the transforming growth factor-β through neuraminidase, thus generating another cascade that ends with c-Jun-N-kinase and triggers transcription followed by the expression of pro apoptosis genes. The virus could synthesize the virulence peptide PB1-F2, a small fragment responsible for destroying lymphocytes, a circumstance that could explain the lymphopenia observed in COVID 19. The action could also be mediated by action on inflammasomes, where the signaling (redox) by ATP can induce the desubiquitination of NLRP3, possibly induced by chlorine dioxide.

Regarding the increase in lactate, it is clear that it can be caused by dysfunction of the enzyme pyruvate dehydrogenase (PDH), as has been demonstrated in patients with sepsis, by mitochondrial dysfunction, or by hyperlactacidemia. The observed improvement could be explained through a mechanism in which chlorine dioxide has a cellular oxygenating effect directly through the release of oxygen or by redox signaling mechanisms with enzyme activation / inhibition that activate the pyruvate pathway with efficient ATP production.

When we inject direct chlorine dioxide into the vein, the amount of lactate in the blood is reduced, as can be seen in the following graph which shows in a comparative way the level of lactate in the blood and after intravenous chlorine dioxide application at 50 ppm at ten minutes post injection (Figure 9).

In comparison, when administering normal saline solution via direct intravenous, and measuring the lactate levels, we observe that there is no variation in the lactate level (Figure 10).

The data obtained in this research validates the effectiveness of chlorine dioxide in COVID 19. This is the first phase IIa clinical trial in the world. In this study there were no inconclusive results. The phase IIa study design is appropriate for the research phase of a new molecule - such as chlorine dioxide - in its development as a potential drug.

There is much to explore about chlorine dioxide and its therapeutic possibilities, about which there is enough reasonable information to continue to study further.

The findings of this research open a complete world of possibilities

k+	3,6	mmoI/L		k+	3,4	mmoI/L	Haag
Ca++	1,20	mmoI/L		Ca++	1,13	mmoI/L	Haag
Cl-	102	mmoI/L		Cl-	107	mmoI/L	
cTCO2	31,6	mmoI/L	Hoog	cTCO2	27,6	mmoI/L	
Hct	45	%		Hct	38	%	
Chgb	9,5	mmoI/L		Chgb	8,0	mmoI/L	
BE(b)	2,5	mmoI/L		BE(b)	1,3	mmoI/L	
Resultate: Meta+				Resultate: Meta+			
Glu	88	mg/dL		Glu	79	mg/dL	
Lac	2,49	mmoI/L	Hoog	Lac	0,79	mmoI/L	
Crea	151	umoI/L	Hoog	Crea	122	umoI/L	Hoog

PRIOR TO INJECTION

AFTER THE INJECTION

Figure 9: Variations in serum lactate before and 10 min after an IV chlorine dioxide injection at 50 ppm. (A. Kalcher. SCHWEIZER VEREIN FÜR NATURWISSENSCHAFTLICHE BIOPHYSIK).

Resultaten: Chiem+				Resultaten: Chiem+			
Na+	141	mmoI/L		Na+	140	mmoI/L	
k+	3,8	mmoI/L	Haag	k+	3,9	mmoI/L	
Ca++	1,14	mmoI/L	Haag	Ca++	1,12	mmoI/L	Haag
Cl-	106	mmoI/L		Cl-	104	mmoI/L	
cTCO2	29,4	%		cTCO2	29,7	%	Hoog
Hct	42	mmoI/L		Hct	44	mmoI/L	
Chgb	8,8	mmoI/L		Chgb	9,3	mmoI/L	
BE(b)	2,4			BE(b)	2,5		
Resultate: Meta+ mg/dL				Resultate: Meta+ mg/dL			
Glu	85	mmoI/L		Glu	91	mmoI/L	
Lac	0,82	umoI/L	Hoog	Lac	0,78	umoI/L	Hoog
Crea	127			Crea	126		

Before injection with saline sol

After injection with saline sol

Figure 10: Lactate variations before and one hour after injection with saline sol.

improvement in morbidity in patients.

In the initial stage of administration of chlorine dioxide, patients show improvement in their febrile symptoms, this could be attributed to its direct virucidal effect due to its action on the spike and on the virus RNA, through the mechanism that we explained above. Oxidation of amino acids and guanine of viral RNA. Additionally, patients begin to improve their sore throat, dry cough and dyspnea. This effect could be attributable to a direct anti-inflammatory action, possibly through an action on inflammasomes and it is even postulated that it may be possible due to action on NETosis processes, through a mechanism that has not yet been clearly elucidated and that we are in the process of developing investigate in detail.

Although we did not include the oxygen saturation measurement variable by pulse oximetry in the parameters of this investigation, we did the measurement in all patients, observing a considerable improvement in some cases in oxygen saturation; being a consistent observation, this improvement

for medical therapists in the world, as these initial results will motivate more formal research, will support the search for new therapeutic options, particularly in COVID 19, and will allow the generation of research spaces at the molecular level and genomics on the processes of cellular respiration, redox signaling and the implantation of oxidative therapies as a new possibility for the approach of multiple pathologies with altered common intracellular bioenergetic mechanisms.

The results can be extended to the control of infectious diseases in agronomy, the development of new nanotechnologies in pharmaceuticals and humans in general by alleviating and controlling COVID 19 and other pandemics or epidemics that may occur in the short future.

The results found here, rather than expanding previous studies, as it is a pilot study and the first of its kind in the world, enable the initiation of many studies on dioxide and the related issues noted.

Conclusion

In conclusion, we can affirm without a doubt, based on test of comparison of proportions and its confidence interval, as well as the paired tests where we used the Wilcoxon – Mann – Whitney test (α : 95%), that the data in most of the variables ($P < 0.05$) obtained indicate that chlorine dioxide is effective in the treatment of COVID 19, making RT-PCR negative in one hundred percent of cases at 7 days, significantly and rapidly modifying the symptoms of the disease, significantly reducing laboratory parameters to normality within 14 to 21 days. We recommend conducting randomized double-blind studies and delving into studies of toxicological safety and therapeutic efficacy of chlorine dioxide in pathologies of epidemiological impact in the near future.

Recognition

We want to express our gratitude for your collaboration and contributions to the doctor

Mitchell B. Liester, Doctor of Medicine, University of Colorado School of Medicine, Colorado Springs Branch for their conceptual contributions and selfless support in the search for new options for patients.

Our sincere thanks to Engineer Victor Yela for their permanent assistance with computer science topics, tabulation and research data; to the physicians of the eleven countries that are members of our research team, and to the thousands of physicians around the world who accompany us in this chlorine dioxide research process, to whom we thank for their support and testimonial, conceptual contributions, as well as their a voice of encouragement to remain in this investigation despite the immense difficulties of the way. **To Andreas Kalcker** for his lights, intelligence and injection of energy and motivation to advance being a beacon of wisdom born from the heart.

To all the patients who participated in the research, in particular for their trust in us, for accompanying us in seeking new possibilities for a world better.

To Nela who was our permanent support with patient data records.

To professors **Luis Prieto, Jorge Gaupp and Pablo Campra**, for his critical remarks to the work. With their observations they forced us to improve our effort.

Money: This work was supported with the researchers' own resources.

Conflict of Interests

The authors declare no conflict of interest or no competing economic interests. Authors have completed the ICMJE conflict of interest declaration form, translated into Spanish by Medwave, and declare that they have not received funding for the article / research; have no financial relationships with organizations that could have an interest in the published article in the last three years; and have no other relationships or activities that could influence the published article. Forms can be requested by contacting the responsible

author. This does not alter the authors' adherence to all policies on the exchange of data and materials.

References

- <https://www.naturalnews.com/2020-05-18-researchers-claim-100-percent-cure-rate-vs-covid-19-ecuador-intravenous-chlorine-dioxide.html>
- <https://www.atsdr.cdc.gov/ToxProfiles/tp160-c1-b.pdf>
- Walls, Alexandra C, Young-Jun Park, M Alejandra Tortorici and Abigail Wall, et al. "Structure, Function, and Antigenicity of the SARS-Cov-2 Spike Glycoprotein." *Cell* 181(2020): 281-292.
- Grifoni, Alba, John Sidney, Yun Zhang and Richard H Scheuermann, et al. "Candidate targets for Immune Responses to 2019-Novel Coronavirus (nCoV): Sequence Homology-and Bioinformatic-Based Predictions." *Cell-Host-Microbe-D-20-00119* (2020).
- Alvarez, Maria E and RT O'Brien. "Mechanisms of Inactivation of Poliovirus by Chlorine Dioxide and Iodine." *Appl Environ Microbiol* 44(1982): 1064-1071.
- Calabrese, Edward J, Gary S Moore and Robert W Tuthill. "The Health Effects of Chlorine Dioxide as a Disinfectant in Potable Water: A literature survey." *J Environ Health* 41(1978): 26-31.
- Chen, Yu-Shiaw and James M Vaughn. "Inactivation of Human and Simian Rotaviruses by Chlorine Dioxide." *Appl Environ Microb* 56(1990): 1363-1366.
- Sun, Chunyun, Long Chen, Ji Yang and Chunxia Luo, et al. "SARS-CoV-2 and SARS-CoV Spike-RBD Structure and Receptor Binding Comparison and Potential Implications on Neutralizing Antibody and Vaccine Development." *Biorxiv* (2020).
- <https://clinicaltrials.gov/ct2/show/NCT04343742>
- <https://clinicaltrials.gov/ct2/show/NCT04409873>
- <https://clinicaltrials.gov/ct2/show/NCT04621149>
- Daniel, F Bernard, Lyman W Condie, Merrel Robinson and Judy A Stober, et al. "Comparative Subchronic Toxicity Studies of Three Disinfectants." *J Am Water Works Assoc* 82(1990): 61-69.
- Department of Health and Human Services, DHSS, INH, United States.
- DeZuane, John. *Handbook of drinking water quality*. John Wiley & Sons, 1997.
- Food and Drug Administration. Food Additive Status, Specific Use Additives 173.300 Chlorine dioxide, 2020.
- Guo, Yan-Rong, Qing-Dong Cao, Zhong-Si Hong and Yuan-Yang Tan, et al. "The Origin, Transmission and Clinical Therapies on Coronavirus Disease 2019 (COVID-19) Outbreak—An Update on the Status." *Military Med Res* 7(2020): 1-10.
- Haag, HB. "The Effect on Rats of Chronic Administration of Sodium Chlorite and Chlorine Dioxide in the Drinking Water." *Report to the Mathieson Alkali Works from the Medical College of Virginia* (1949).
- Heffernan, WP, C Guion and RJ Bull. "Oxidative Damage to the Erythrocyte Induced by Sodium Chlorite, *in vivo*." *J Environ Pathol Toxicol* 2(1979): 1487-1499.
- <https://www.vyphidroasesores.com/>
- Insignares- Carrione E, Bolano Gomez B and Kalcker Andreas. "Chlorine Dioxide in COVID-19: Hypothesis about the Possible Mechanism of Molecular Action in SARS-CoV-2." *J Mol Genet Med* 14 (2020): 468.
- Jin, Min, Jinyang Shan, Zhaoli Chen and Xuan Guo, et al. "Chlorine Dioxide Inactivation of Enterovirus 71 in Water and its Impact on Genomic Targets." *Environ Sci Technol* 47(2013): 4590-4597.
- Lan, Jun, Jiwan Ge, Jinfang Yu and Sisi Shan, et al. "Structure of the SARS-CoV-2 Spike Receptor-Binding Domain Bound to the ACE2 Receptor." *Nature* 581(2020): 215-220.
- Junli, Huang, Wang Li, Ren Nenqi and Liu Xue Li, et al. "Disinfection Effect of Chlorine Dioxide on Viruses, Algae and Animal Planktons in Water." *Water Res* 31(1997): 455-460.
- Kalcker, Andreas. *Forbidden health*. Voedia, 2016.
- Kály-Kullai, K, M Wittmann, Z Noszticzus and László Rosivall. "Can Chlorine Dioxide Prevent the Spreading of Coronavirus or other Viral Infections? Medical Hypotheses." *Physiol Int* 107(2020): 1-11.

26. Letko, Michael, Andrea Marzi and Vincent Munster. "Functional Assessment of Cell Entry and Receptor Usage for SARS-CoV-2 and Other Lineage B Beta corona viruses." *Nature Microbiol* 5(2020): 562-569.
27. Li, Wenhui, Michael J Moore, Natalya Vasilieva and Jianhua Sui, et al. "Angiotensin-Converting Enzyme 2 is a Functional Receptor for the SARS Coronavirus." *Nature* 426(2003): 450-454.
28. Li, Jun Wen, Zhong Tao Xin, Xin Wei Wang and Jin Lai Zheng, et al. "Mechanisms of Inactivation of Hepatitis A Virus in Water by Chlorine Dioxide." *Water Res* 38(2004): 1514-1519.
29. Lin, Ja-Liang and Paik-Seong Lim. "Acute Sodium Chlorite Poisoning associated with Renal Failure." *Renal Failure* 15(1993): 645-648.
30. Zhang, Linlin, Daizong Lin, Xinyuanyuan Sun and Katharina Rox, et al. "X-ray Structure of Main Protease of the Novel Coronavirus SARS-Cov-2 Enables Design of -Ketoamide Inhibitors." *BioRxiv* (2020).
31. Lubbers, Judith R, Sudha Chauhan and Joseph R Bianchine. "Controlled Clinical Evaluations of Chlorine Dioxide, Chlorite and Chlorate in Man." *Environ Health Persp* 46(1982): 57-62.
32. Manterola, Carlos and Tamara Otzen. "Critical Analysis of Biomedical Literature." *Int J Morphol* 32(2014): 599-607.
33. Moore, Gary S, Edward J Calabrese, Salvatore R DiNardi and Robert W Tuthill. "Potential Health Effects of Chlorine Dioxide as a Disinfectant in Potable Water Supplies." *Med Hypotheses* 4(1978): 481-496.
34. Musil J, Kontek Z, Chalupa J and Schmidt P (1964) Toxicological Aspects Of ClO₂ Application for the Treatment of Water Containing Phenol. *Chem-Technol Praze* 8: 327-345.
35. <https://www.cdc.gov/niosh/idlh/10049044.html>
36. National Institutes of Health. Novel Coronavirus Structure Reveals Targets for Vaccines and Treatments, 2020.
37. Noszticzus, Zoltán, Maria Wittmann, Kristóf Kály-Kullai and Zoltán Beregvári, et al. "Chlorine dioxide is a Size-Selective Antimicrobial Agent." *PLoS one* 8(2013): e79157.
38. Ogata, Norio. "Inactivation of influenza virus haemagglutinin by chlorine dioxide: Oxidation of the Conserved Tryptophan 153 Residue in the Receptor-Binding Site." *J Gen Virol* 93(2012): 2558-2563.
39. Láng, Orsolya, Krisztina S Nagy, Julia Láng and Katalin Perczel-Kovács, et al. "Comparative Study of Hyper pure Chlorine Dioxide with Two other Irrigants Regarding the Viability of Periodontal Ligament Stem Cells." *Clin Oral Invest* 2(2020): 1-12.
40. Pichert, Annelie and Jürgen Arnhold. "Interaction of the Chlorite-Based Drug WF10 and Chlorite with Hemoglobin, Methemoglobin and Ferryl Hemoglobin." *Arch Biochem Biophys* 585(2015): 82-89.
41. Couri, Daniel, Mohamed S Abdel-Rahman and Richard J Bull. "Toxicological Effects of Chlorine Dioxide, Chlorite and Chlorate." *Environ Health Persp* 46(1982): 13-17.
42. YanRH, ZhangYY. "Structural Basis for the Recognition of the SARS-CoV-2 by Full Length Human ACE2." *bioRxiv*.
43. Schijven, Jack, Peter Teunis, Trudy Suylen and Henk Ketelaars. "QMRA of Adenovirus in Drinking Water at a Drinking Water Treatment Plant using UV and Chlorine Dioxide Disinfection." *Water Res* 158(2019): 34-45.
44. Shi, L and C Xie. "Experimental Observation on Acute Toxicity and Irritative Effect of Stable Chlorine Dioxide." *Zhongguo Xiaoduxue Zashi* 16(1999): 39-40.
45. Simmons, Graham, Jacqueline D Reeves, Andrew J Rennekamp and Sean M Amberg, et al. "Characterization of Severe Acute Respiratory Syndrome-Associated Coronavirus (SARS-CoV) Spike Glycoprotein-Mediated Viral Entry." *Proc Nat Acad Sci* 101(2004): 4240-4245.
46. Song, Wenfei, Miao Gui, Xinquan Wang and Ye Xiang. "Cryo-EM Structure of the SARS Coronavirus Spike Glycoprotein in Complex with its Host Cell Receptor ACE2." *PLoS Pathog* 14(2018): e1007236.
47. <https://www.atsdr.cdc.gov/toxprofiles/tp160.pdf>
48. https://cfpub.epa.gov/ncea/iris/iris_documents/documents/toxreviews/0648tr.pdf
49. https://www3.epa.gov/pesticides/chem_search/ppls/074986-00001-20040414.pdf
50. https://www3.epa.gov/pesticides/chem_search/cleared_reviews/csr_PC-020503_26-Sep-08_a.pdf
51. <https://iaspub.epa.gov/apex/pesticides/f?>
52. <https://www.epa.gov/pesticide-registration/list-n-disinfectants-coronavirus-covid-19>
53. <https://consumermedsafety.org/medication-safety-articles/item/179-miracle-treatment-turns-into-potent-bleach>
54. <https://www.accessdata.fda.gov/scripts/cdrh/cfdocs/cfcfr/cfrsearch.cfm?fr=173.300>
55. <https://www.fda.gov/emergency-preparedness-and-response/coronavirus-disease-2019-covid-19/coronavirus-disease-2019-covid-19-frequently-asked-questions>.
56. Wang, Peigang, Jian Chen, Aihua Zheng and Yuchun Nie, et al. "Expression Cloning of Functional Receptor used by SARS Coronavirus." *Biochem Biophys Res Commun* 315(2004): 439-444.
57. Wang, Xin-Wei, Jin-Song Li, Min Jin and Bei Zhen, et al. "Study on the Resistance of Severe Acute Respiratory Syndrome-Associated Coronavirus." *J Virol Methods* 126(2005): 171-177.
58. [https://www.who.int/emergencies/diseases/novel-coronavirus-2019/technical-guidance/naming-the-coronavirus-disease-\(covid-2019\)-and-the-virus-that-causes-it](https://www.who.int/emergencies/diseases/novel-coronavirus-2019/technical-guidance/naming-the-coronavirus-disease-(covid-2019)-and-the-virus-that-causes-it).
59. <https://www.who.int/emergencies/diseases/novel-coronavirus-2019/events-as-they-happen>.
60. <https://www.who.int/docs/default-source/coronaviruse/situation-reports/20200522-covid-19-sitrep>
61. https://www.who.int/substance_abuse/facts/en/
62. Zambrano-Estrada, Xochitl, Carlos A Dominguez-Sanchez, Marina Banuet-Martinez and Fabiola Guerrero-de la Rosa, et al. "Evaluation of the Antiviral Effect of Chlorine Dioxide (ClO₂) using a Vertebrate Model Inoculated with Avian Coronavirus." *bioRxiv*, 2020.
63. Xue, Bin, Min Jin, Dong Yang and Xuan Guo, et al. "Effects of Chlorine and Chlorine Dioxide on Human Rotavirus Infectivity and Genome Stability." *Water Res* 47(2013): 3329-3338.
64. Young, RO. "Chlorine dioxide (ClO₂) as a Non-Toxic Antimicrobial Agent for Virus, Bacteria and Yeast (*Candida albicans*)." *Int J Vaccines Vaccin* 2(2016): 00052.
65. Zhu, Zhenbang, Yang Guo, Piao Yu and Xiaoying Wang, et al. "Chlorine Dioxide Inhibits the Replication of Porcine Reproductive and Respiratory Syndrome Virus by Blocking Viral Attachment." *Infect Genet Evol* 67(2019): 78-87.

How to cite this article: Carrione E, Bolano Gomez B, Andrade Yohanny, Callisperis Patricia and Sucho Ana, et al. "Determination of the Effectiveness of Chlorine Dioxide in the Treatment of COVID 19." *J Mol Genet Med* 15(2021): 481